

FED. DIST. NO.	STATE	U.S. PW PROJ. NO.	FISCAL YEAR	SHEET NO.	TOTAL SHEETS
5	ARK.	NRH 311-D	1934	1	17

JOB NO. 3166

244

STATE OF ARKANSAS STATE HIGHWAY COMMISSION

INDEX OF SHEETS

Sheet No.	Drwg. No.	Sheet
1	3777	Title Sheet
2	3778	Schedule of Quantities
3	3779	Layout of Bridge No. 1867
4	3780	Details of Abutments for Bridge No. 1867
5	3781	Details of Bents for Bridge No. 1867
6	2154	Details of 41' I-Beam Span for Bridges 1867 & 1868
7	3782	Layout of Bridge No. 1868
8	3783	Details of Abutments for Bridge No. 1868
9	3784	Layout of Bridge No. 1708
10	3785	Layout of Bridge No. 1707
11	3786	Layout of Bridge No. 1869
12	3787	Layout of Bridge No. 1321
13	3788	Details of Abutments for Bridges No. 1708, 1707, 1869 & 1321
14	3789	Details of Piers for Bridges No. 1708, 1707, 1869 & 1321
15	2153	Details of 31' I-Beam Span for Bridges No. 1708, 1707 & 1321 & 1869
16	2386	Details of Bronze State Bridge Name Plates and Bronze Project Marker Plates
17	1885	Details of Embankment Construction at Bridge Ends

QUANTITIES

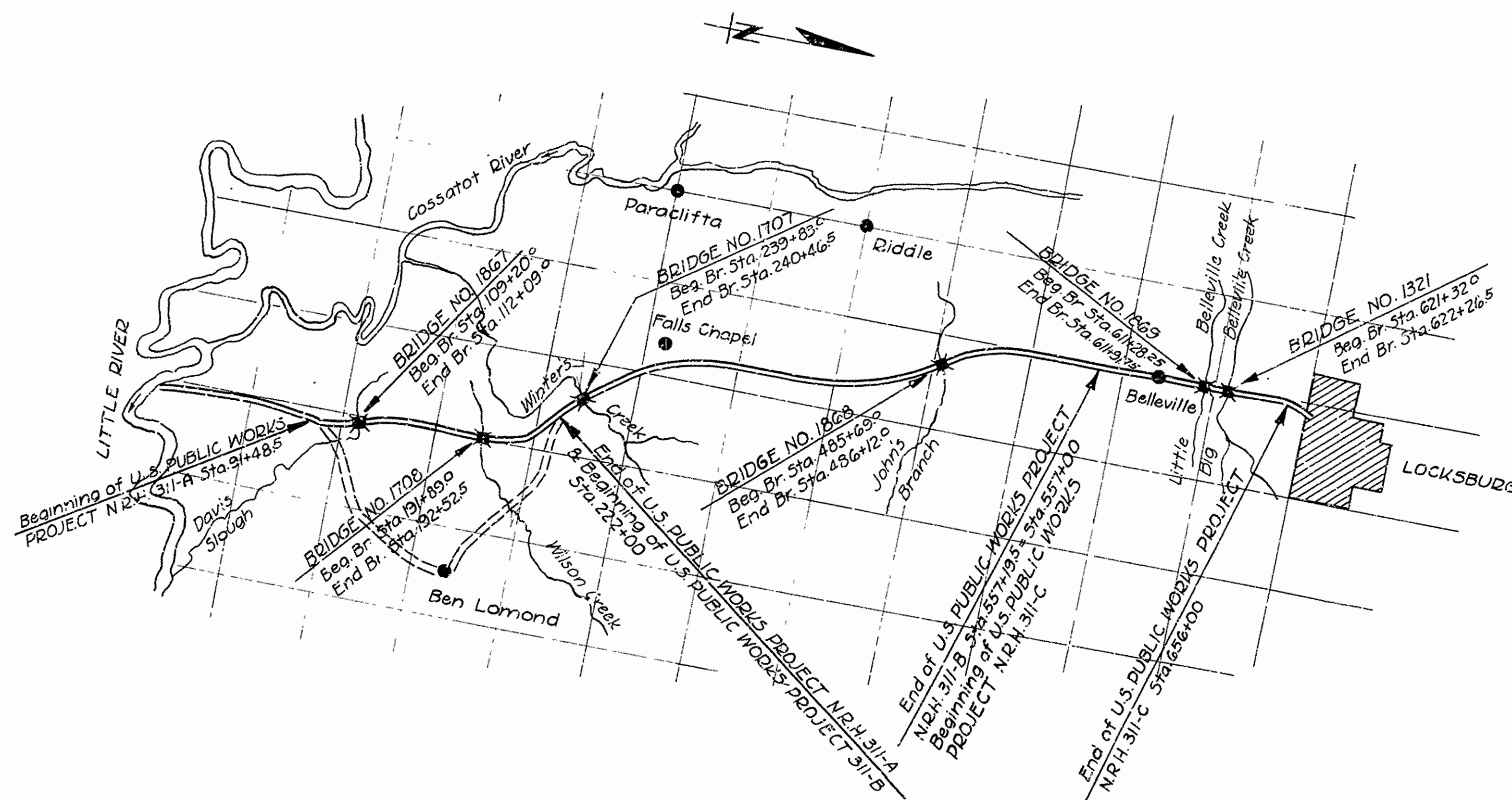
Item No.	Item	Quantity	Unit
13	Dry Excavation for Structures	1,231	Cu.Yds.
13	Wet Excavation for Structures	1,451	Cu.Yds.
91	Class "4" Concrete for Bridges	884.9	Cu.Yds.
91	Class "5" Concrete for Bridges	3673	Cu.Yds.
92	Reinforcing Steel for Bridges	164,673	Lbs.
94	Concrete Railing for Bridges	1,337	Lin.Ft.
95	Dip Rap	449	Cu.Yds.
96	Structural Steel in Beam Spans	280,786	Lbs.
98	Untreated Timber Piling	5,328	Lin.Ft.
S.P.	Machined Bearing Plates	13,496	Lbs.
S.P.	Bronze State Bridge Name Plates	12	Each
S.P.	Bronze Project Marker Plates	12	Each
S.P.	Removal of Existing Structures and Maintaining Traffic	Lump Sum	

PLAN OF PROPOSED BRIDGES ON LITTLE RIVER-LOCKSBURG ROAD SEVIER COUNTY

ROUTE 71 SEC. 5

JOB No 3166

U.S. PUBLIC WORKS PROJECT N.R.H. 311-D



Specifications approved by Chief, Bureau of Public Roads, September 28, 1925, and adopted by State Highway Commission, March 30, 1925, with revisions and Special Provisions as follows:

Pamphlet	Revised	Month	Year	Appr.	Date
A	L	Feb.	10, 1933		
"	M	Mar.	1, 1931		June 13, 1931
"	N	Oct.	1, 1933		
"	O	Oct.	1, 1933		
"	P	Oct.	1, 1933		

SPECIAL PROVISIONS

Item	No. of Sheets
Subletting, Labor & NRA Code Compliance	13
Beginning and Prosecution of Work	1
Machined Bearing Plates	1
Bronze Project Marker Plates & Bronze State Bridge Name Plates	1
Removal of Existing Structures & Maintaining Traffic	1
Engineer's Field Office	1

LAYOUT

Scale: 1" = 1 Mile

LENGTH OF PROJECT	= 617'-0" = 0.116 MILES
LENGTH OF BRIDGES	= 617'-0" = 0.116 MILES
LENGTH OF EMBANKMENT	= 0'-0"
LENGTH OF JOB	= 617'-0" = 0.116 MILES

APPROVED	
CHIEF ENGINEER - U. S. BUREAU OF PUBLIC ROADS	
APPROVED	
DISTRICT ENGINEER - U. S. BUREAU OF PUBLIC ROADS	
APPROVED	
CHIEF - U. S. BUREAU OF PUBLIC ROADS	
APPROVED	
CHAIRMAN - STATE HIGHWAY COMMISSION	
APPROVED	
STATE HIGHWAY ENGINEER	

M.B. Gaver
BRIDGE ENGINEER

BRIDGES No. 1867, 1708, 1707, 1869, 1321
DRAWING No. 3777

FED. ROAD DIST. NO.	STATE	U.S. PUBLIC WORKS PROJECT NO.	FISCAL YEAR	SHEET NO.	TOTAL SHEETS
6	ARK.	N.R.H. 311-D	1934	2	17

JOB NO. 3166

SCHEDULE OF QUANTITIES
U.S. PUBLIC WORKS PROJECT NO. N.R.H. 311-D
STATE JOB NO. 3166

Items		Item No. 13 Dry Excav. for Struct's Cu. Yds.	Item No. 13 Wet Excav. for Struct's Cu. Yds.	Item No. 91 Class "A" Conc. for Bridges Cu. Yds.	Item No. 91 Class "S" Conc. for Bridges Cu. Yds.	Item No. 92 Reinf. Steel for Bridges Lbs.	Item No. 94 Conc. Railing for Bridges Lin. Ft.	Item No. 95 Rip Rap Cu. Yds.	Item No. 96 Struct. Steel in Beam Spans Lbs.	Item No. 98 Untr. Timber Piling Lin. Ft.	Item No. 5.P Machined Bear. Plates Lbs.	Item No. 5.P Bronze St. Br. Name Plates Each	Item No. 5.P Bronze Proj. Marker Pl's Each	Item No. 5.P Removal of Exst'g Struct. & Maintain. Traffic.
Bridge No. 1867	Superstructure 7-41' I-Beam Spans	-	-	-	171.7	37,005	574.0	-	147,770	-	6,013	-	-	
	Abutment No. 1	122.0	74.0	59.6	-	6,562	10.5	65.0	-	324.0	-	1	-	
	Bent No. 1	17.0	66.0	28.1	-	2,079	-	-	-	216.0	-	-	-	
	Bent No. 2	0	53.0	28.1	-	2,079	-	-	-	216.0	-	-	-	
	Bent No. 3	0	57.0	28.1	-	2,079	-	-	-	216.0	-	-	-	
	Bent No. 4	2.0	66.0	28.1	-	2,079	-	-	-	216.0	-	-	-	
	Bent No. 5	15.0	66.0	28.1	-	2,079	-	-	-	216.0	-	-	-	
	Bent No. 6	25.0	66.0	28.1	-	2,079	-	-	-	216.0	-	-	-	
	Abutment No. 2	122.0	74.0	59.6	-	6,562	10.5	65.0	-	324.0	-	1	-	
	Totals	303.0	522.0	287.8	171.7	62,603	595.0	130.0	147,770	1,944.0	6,013	2	2	
Bridge No. 1868	Superstructure 1-41' I-Beam Span	-	-	-	24.6	5,354	82.0	-	21,110	-	859	-	-	
	Abutment No. 1	27.0	131.0	57.5	-	4,978	9.0	-	-	-	-	1	-	
	Abutment No. 2	48.0	131.0	57.5	-	4,978	9.0	-	-	-	-	1	-	
	Totals	75.0	262.0	115.0	24.6	15,310	100.0	0.0	21,110	0.0	859	2	2	
Bridge No. 1708	Superstructure 2-31' I-Beam Spans	-	-	-	38.0	8,290	124.0	-	24,868	-	1,472	-	-	
	Abutment No. 1	96.0	63.0	44.7	-	4,961	10.5	29.0	-	288.0	-	1	-	
	Pier No. 1	0	45.0	24.9	-	1,958	-	-	-	216.0	-	-	-	
	Abutment No. 2	136.0	63.0	44.7	-	4,961	10.5	24.0	-	288.0	-	1	-	
	Totals	232.0	171.0	114.3	38.0	20,170	145.0	53.0	24,868	792.0	1,472	2	2	
Bridge No. 1707	Superstructure 2-31' I-Beam Spans	-	-	-	38.0	8,290	124.0	-	24,868	-	1,472	-	-	
	Abutment No. 1	98.0	52.0	44.7	-	4,961	10.5	44.0	-	288.0	-	1	-	
	Pier No. 1	0	57.0	24.9	-	1,958	-	-	-	216.0	-	-	-	
	Abutment No. 2	95.0	52.0	44.7	-	4,961	10.5	44.0	-	288.0	-	1	-	
	Totals	193.0	141.0	114.3	38.0	20,170	145.0	88.0	24,868	792.0	1,472	2	2	
Bridge No. 1869	Superstructure 2-31' I-Beam Spans	-	-	-	38.0	8,290	124.0	-	24,868	-	1,472	-	-	
	Abutment No. 1	70.0	63.0	44.7	-	4,961	10.5	43.0	-	288.0	-	1	-	
	Pier No. 1	0	39.0	24.9	-	1,958	-	-	-	216.0	-	-	-	
	Abutment No. 2	52.0	55.0	44.7	-	4,961	10.5	52.0	-	288.0	-	1	-	
	Totals	122.0	157.0	114.3	38.0	20,170	145.0	95.0	24,868	792.0	1,472	2	2	
Bridge No. 1321	Superstructure 3-31' I-Beam Spans	-	-	-	57.0	12,412	186.0	-	37,302	-	2,208	-	-	
	Abutment No. 1	193.0	64.0	44.7	-	4,961	10.5	40.0	-	288.0	-	1	-	
	Pier No. 1	-	35.0	24.9	-	1,958	-	-	-	216.0	-	-	-	
	Pier No. 2	-	35.0	24.9	-	1,958	-	-	-	216.0	-	-	-	
	Abutment No. 2	107.0	64.0	44.7	-	4,961	10.5	43.0	-	288.0	-	1	-	
	Totals	306.0	198.0	139.2	57.0	26,250	207.0	83.0	37,302	1,008.0	2,208	2	2	
GRAND TOTALS		1,231.0	1,451.0	884.9	367.3	164,673	1,337.0	449.0	280,786	5,328.0	13,496.0	12	12	LUMP SUM

See Special Provisions

SCHEDULE OF QUANTITIES
FOR BRIDGES ON
LITTLE RIVER-LOCKSBURG ROAD
SEVIER COUNTY
ROUTE 75, SEC. 1

ARKANSAS STATE HIGHWAY COMMISSION
LITTLE ROCK, ARK.

N. B. Kanner
BRIDGE ENGINEER

Drawn by: E.B.S. Date: 4-21-34
Traced by: A. Date: 4-23-34
Checked by: Dots:
1867, 1868, 1708, 1707,
1869 & 1321

BRIDGES NO.

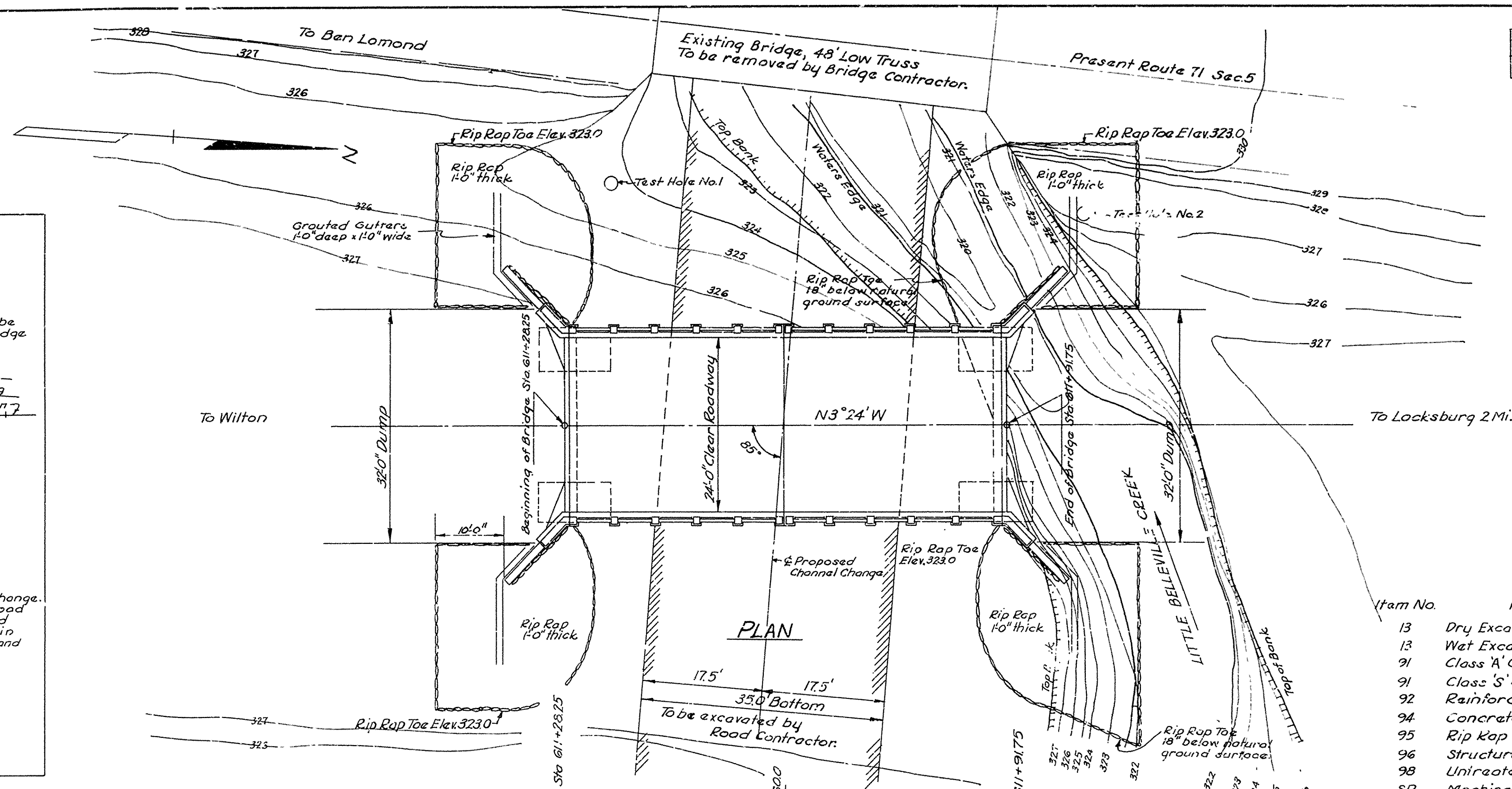
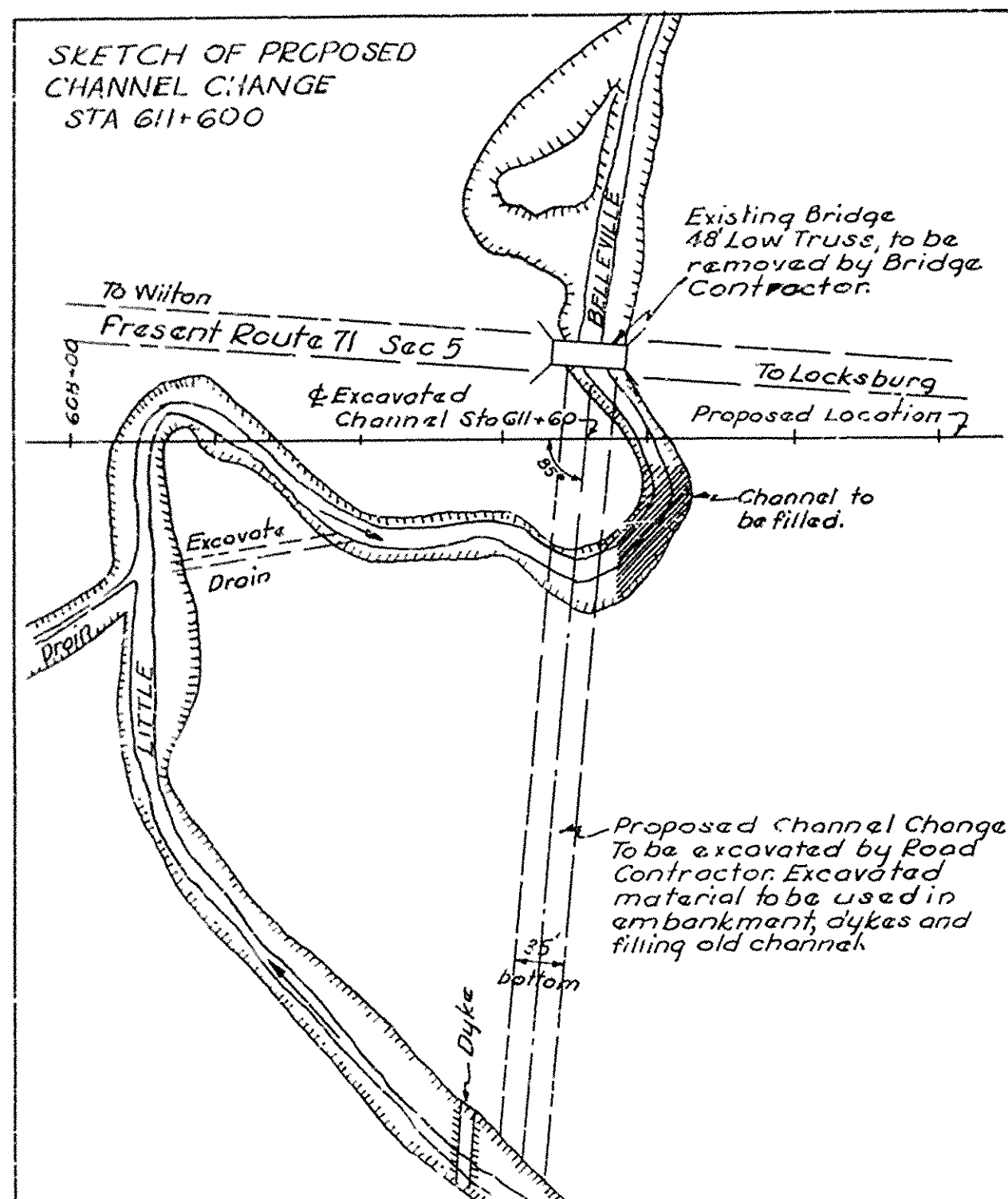
DRWG NO. 3778

From Sta.	To Sta.	Rt. of $\frac{1}{2}$	Lt. of $\frac{1}{2}$	Total Width
608+00	613+00	50.0'	50.0'	100.0'

TANGENT DISTANCE	
To Beginning of Bridge	From End of Bridge
2,452.25'	247.85

FED ROAD DIST NO.	STATE	U.S.PUB.WKS. PROJ. NO.	FISCAL YEAR	SHEET NO.	TOTAL SHEETS
6	ARK.	N.R.H.311-D	1934	11	17

Job. No. 3166



Rip Rap Notes

Grouted Rip Rap Gutters 140" deep and about 140" wide shall be placed at the end of wing walls as shown and as directed by the Engineer.

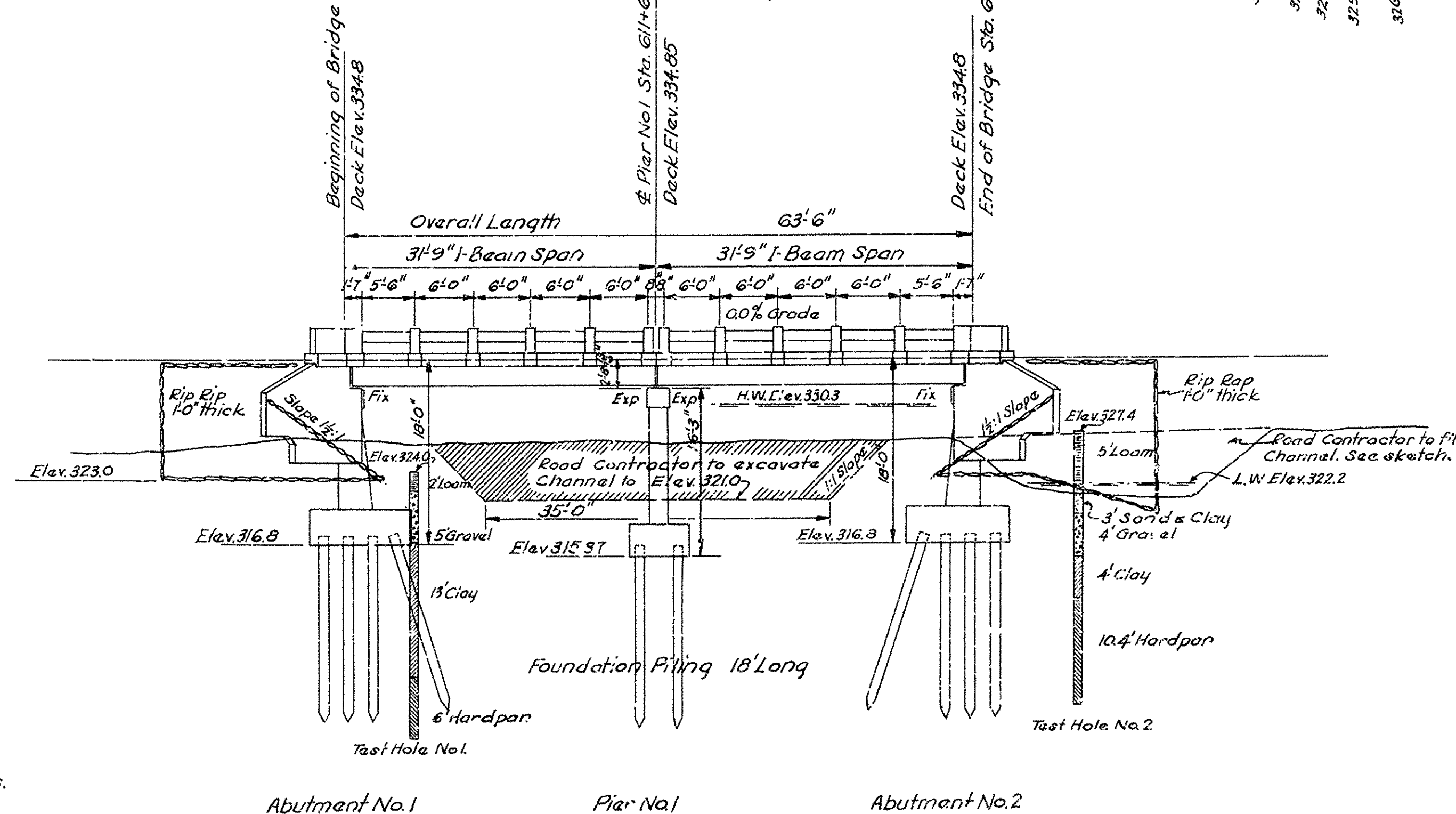
Full payment for these gutters shall be included in the unit price bid for Rip Rap.

Excavation for Rip Rap toe below the natural ground surface shall be paid for as Dry Excavation for Structures, except only that portion of trench in excess of that required for 18' depth of toe shall be included in quantity for payment.

Lines of excavation shall be to neat lines of rip rap.

GENERAL NOTES

*All concrete to be placed in the dry.
All exposed corners to have $\frac{3}{4}$ " chamfer, unless otherwise shown.
All concrete in Substructure to be Class "A".
Expansion joints to be constructed as shown on Layout.
Length of Piling shown are assumed for purpose of
estimating quantities only. Actual length to be determined in field.
Volume occupied by Pile heads will not be included in pay
quantity of concrete in footings.
Contractor shall place Rip Rap at Bridge Ends as shown.
Contractor is to remove existing Bridge. See Special Provisions.
For Details of Abutments, See Dwa. No. 3788
For Details of Pier, See Dwa. No. 3789
For Details of 31' 9" I-Beam Spans, See Dwa. No. 2153
Specifications: Arkansas Standard Road and Bridge Specifications,
adopted May 30, 1925, and Revised.*



Max. Pile Load = 15 Tons

Drair age Area: 3712 Ac. Hilly - 50% Wooded

B.M. Elev. 325.98 Nail in root 18" Oak
20' Lt. Sta. 612+00

QUANTITIES			
Item No.	Item	Quantity	Unit
13	Dry Excavation for Structures	122.0	Cu. Yds.
13	Wet Excavation for Structures	157.0	Cu. Yds.
91	Class A Concrete for Bridges	114.3	Cu. Yds.
91	Class S Concrete for Bridges	38.0	Cu. Yds.
92	Reinforcing Steel for Bridges	20,170	Lbs.
94	Concrete Railing for Bridges	145	Lin Ft.
95	Rip Rap	95.0	Cu. Yds.
96	Structural Steel in Beam Spans	24,868	Lbs.
98	Unreated Timber Piling	792	Lin Ft.
SP	Machined Bearing Plates	1472	Lbs.
SP	Bronze State Bridge Name Plates	2	Each
SP	Bronze Project Marker Plates	2	Each
SP	Removal of Existing Structure and Maintaining Traffic		Lump Sum

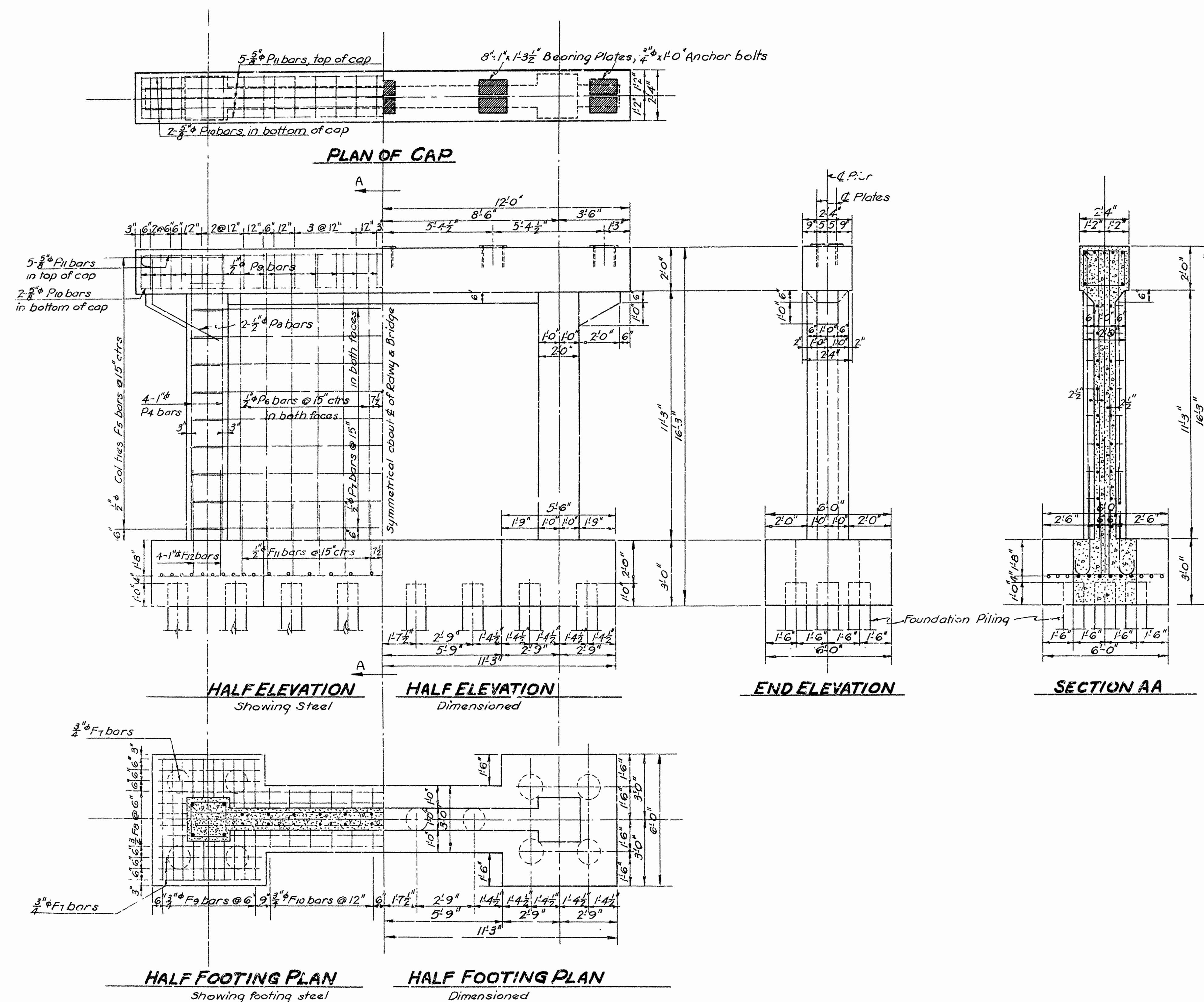
LAYOUT
BRIDGE OVER LITTLE BELLEVILLE CREEK
LITTLE RIVER~LOCKSBURG ROAD
SEVIER COUNTY
ROUTE 71 SEC. 5
ARKANSAS STATE HIGHWAY COMMISSION
LITTLE ROCK, ARK.

Drawn By: E.B.S. Date: 4-5-34
Traced By: — Date: 4-12-34
Checked By: Date:
BRIDGE NO. 1869 DRAWING NO. 3786

W.B. Garver
BRIDGE ENGINEER

FED ROAD DIST. NO.	STATE	U.S. PUB. WKS. PROJECT NO.	FISCAL YEAR	SHEET NO.	TOTAL SHEETS
6	ARK	N.R.H. 311-D	1934	14	17

Job. No. 3166



Mark	Size	Length	A	B	Bending Diagram
F12	1" ϕ	6'-1"			
P5	1 1/2" ϕ	7'-3"	1'-7 1/2"	1'-7 1/2"	
P9	2" ϕ	7'-11"	1'-7 1/2"	1'-11 1/2"	
1-3	1 1/2" ϕ	5'-6"			
P11	5/8" ϕ	24'-9"			

GENERAL NOTES:
All concrete to be Class A.
All exposed corners to have $\frac{3}{4}$ " unless
otherwise shown.
Foundation piling to be of Untreated Timber.
For Details of Superstructure, See Dwg. No. 2153

DETAILS OF PIERS
FOR BRIDGES OVER LITTLE BELLEME CREEK,
BIG BELLEVILLE, WINTERS & WILSON CREEKS
LITTLE RIVER-LOCKSBURG ROAD
SEVIER COUNTY
ROUTE 71 SEC. 5

ARKANSAS STATE HIGHWAY COMMISSION
LITTLE ROCK, ARK.

Drawn By: E.B.S. Date: 4-6-34. Scale: $\frac{3}{8}'' = 1'-0''$
 Traced By: — Date: 4-9-34.
 Checked By: — Date: —
 BRIDGE No. 1869, 1321, 1707 & 1708 DRAWING No. 37

M. B. Garver
BRIDGE ENGINEER